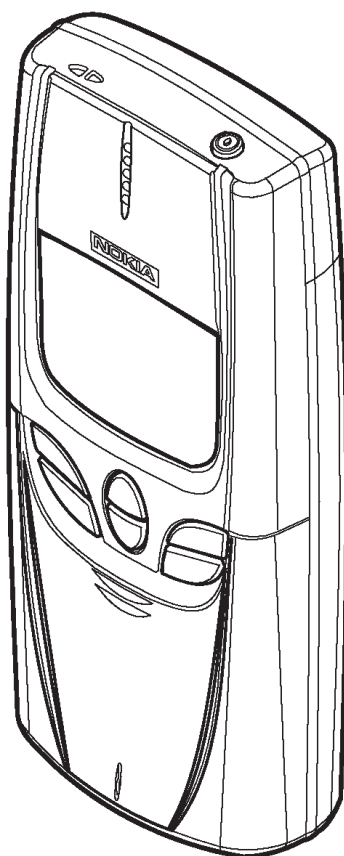


PAMS Technical Documentation

NSM-2 Series Transceivers

Product Variants



CONTENTS

Transceiver NSM-2	3
Modules	3
Exploded View of Transceiver NSM-2	4
Assembly Parts of NSM-2 NX	5

Transceiver NSM-2

The NSM-2 is a dual band transceiver unit designed for the GSM900 (including EGSM) and GSM1800 networks. It is both GSM900 phase 2 power class 4 transceiver (2W) and GSM1800 power class 1 (1W) transceiver.

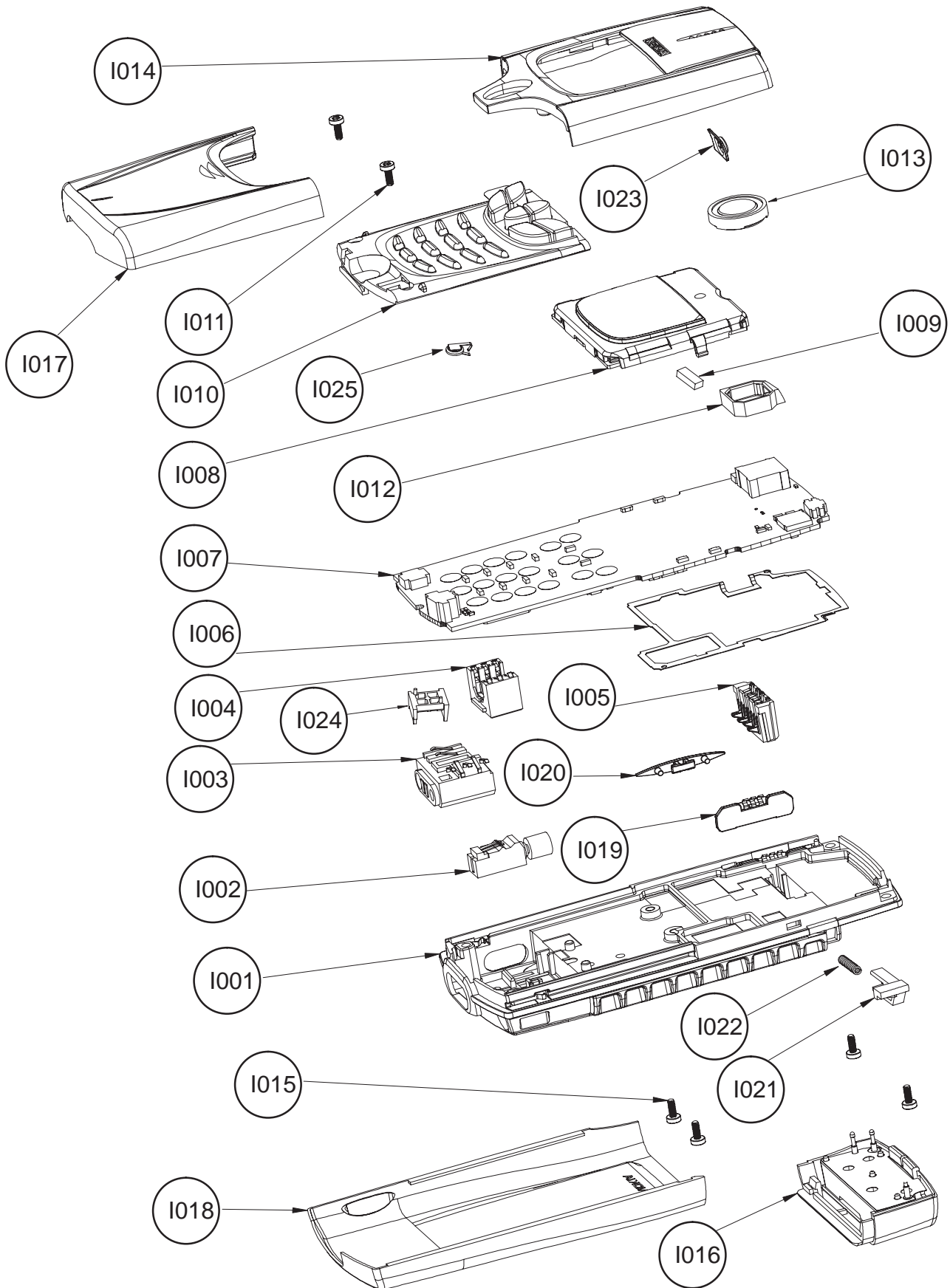
The plug-in SIM (Subscriber Identity Module) card is located inside the phone. SIM card is accessed after removal of metal B-cover and battery.

NOTE: The Service Manual is intended for use by qualified service personnel only.

Modules

Transceiver NSM-2NX	0501899
• system module RM7	0201236
• LCD module UX7	0201411
• mechanics MNSM2	0261890

Exploded View of Transceiver NSM-2



Assembly Parts of NSM-2 NX

CIRCUIT REF./ ITEM	Q'TY	CODE	DESCRIPTION	VALUE, TYPE
I001		9490066	Main frame assy	DMC02321
I002		6800045	Vibra motor assy	
I003		5409095	DC & HS connector	
I004		5409117	SIM connector	
I005		5409093	Battery connector	
I006		9510554	Metal gasket	DMD05218
I007		0201236	RM7 radio module	
I008		9490055	LCD module assy	DMC02283
I009		9780250	Connector elastomer silicon stax	
I010		9794028	Keymat module Europe, APAC	
		9794027	Keymat module China	
		9794026	Keymat module Taiwan	
I011	2	6290073	Screw 1.8x8remf. T6	DMC03671 (Use 17 Ncm torque)
I012		9480508	Buzzer rubber	DMD04781
I013		5140177	Speaker + spring 103±3 dB	
I014		9456552	A-cover assy	DMC02282
I015	4	6150029	Screw M1.6x4.5 flat head 0.8mm	(Use 17 Ncm torque)
I016		0660192	Antenna integrated	
I017		9456580	Slide assy Europe	DMC01904
		9456750	Slide assy Asia	DMC01904
I018		9590003	B-cover assy Europe	DMC01979
		5950005	B-cover assy Asia	DMC01979
I019		5219019	Volume switch	DMD04464
I020		9451506	Volume key	DMD04466
I021		9460306	Latch	DM04432
I022		9510516	Latch spring	DMD04937
I023		9790404	Power key	DMD05375
I024		9660147	Twin Rip	DMD06257
I025		4700119	RTC-Battery	
		9480579	Duplexer foam	DMD06369

This page intentionally left blank.